



FDB | commercial interiors



Lattice™

● Lattice™ Trapezium
in Ironbank

● Morgan Lovell,
New Zealand



Sculptural functionality

Delightfully abstract, yet calculated in form, Lattice™ is a range of hanging sculptures built from a grid of acoustic fins. With each intersection, Lattice covers a greater surface area than traditional parallel fin systems—effectively absorbing echo and reverberation in interior spaces. The Lattice range offers three standard designs, each suited to a variety of applications. Made from 100% polyester fibre, Lattice is lightweight and structurally sound—designed to hold shape throughout its lifetime.

To find out more about Lattice
visit www.autexglobal.com

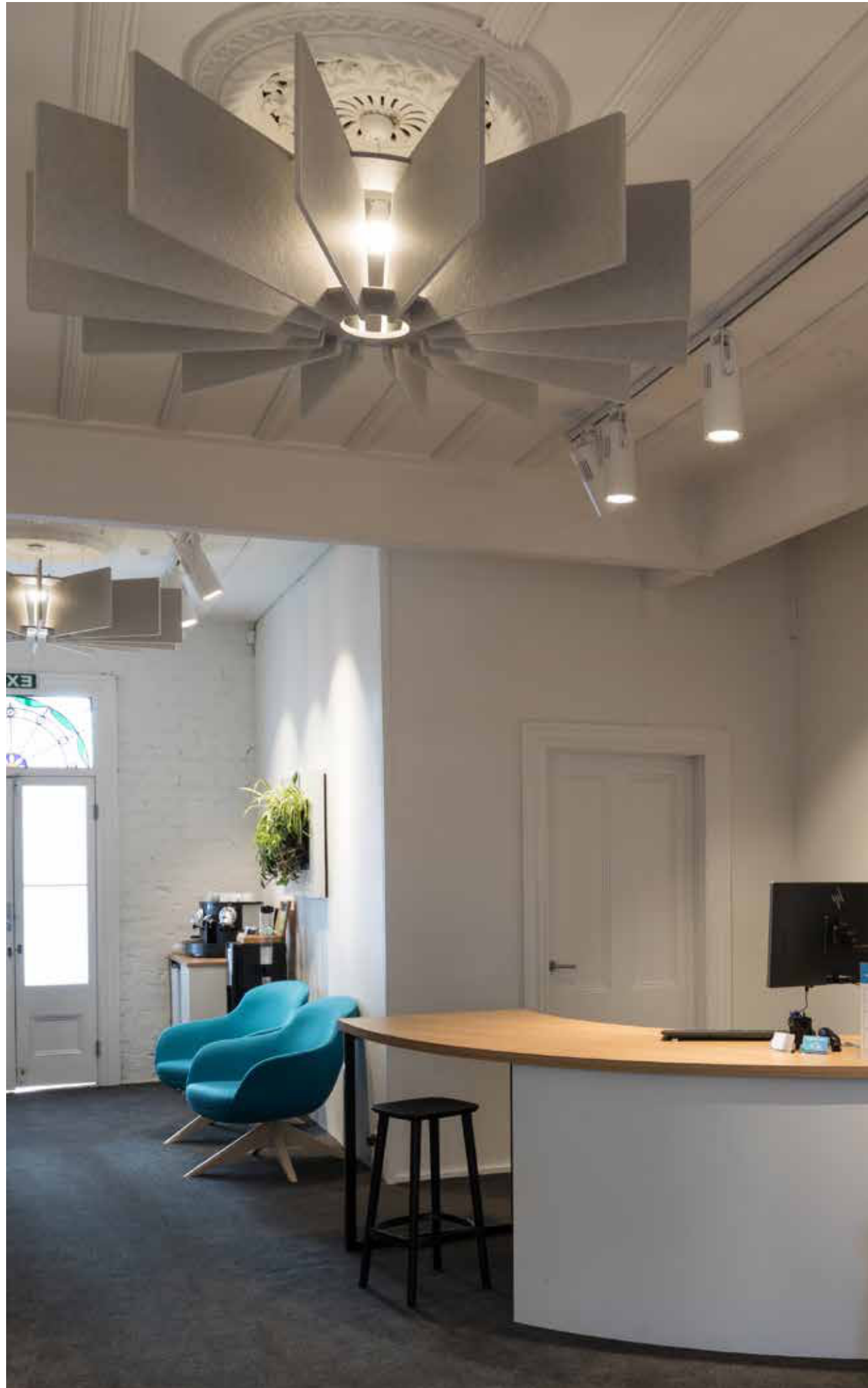


Features and benefits

- Delivers excellent acoustic performance
- Covers a greater surface area than traditional parallel fin systems for optimum acoustic absorption
- Available in 23 colours with three styles
- Easily customisable

Applications

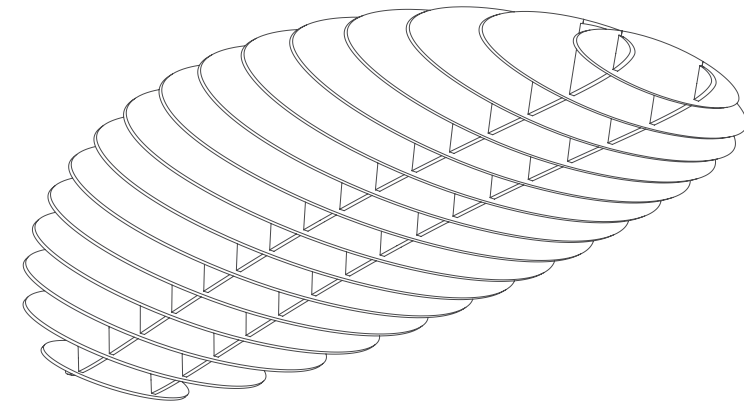
- Decorative and functional acoustic treatment for interior spaces
- Can be suspended or direct fixed to ceilings



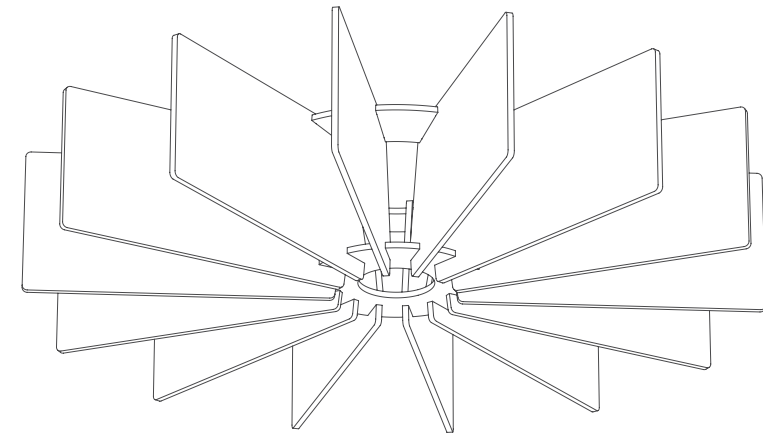
● Bay Audiology,
New Zealand

● Lattice Torus
in Savoye

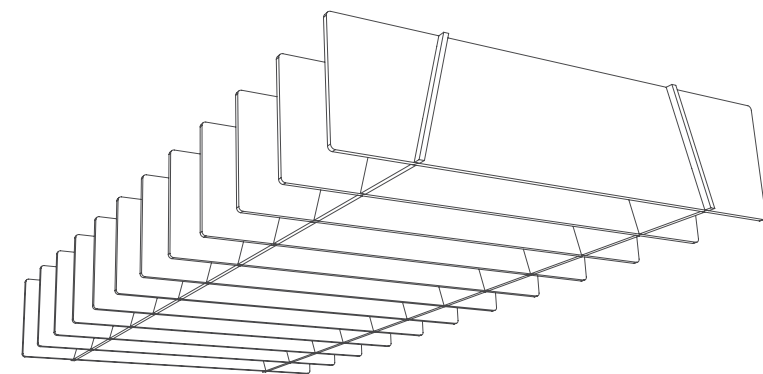
Design options



Eclipse

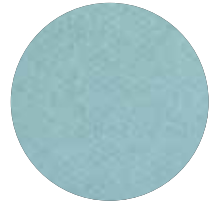


Torus

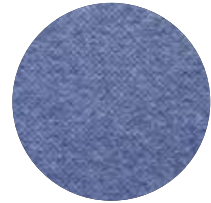


Trapezium

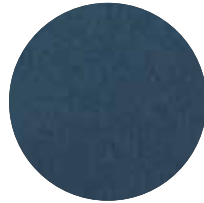
Colour options



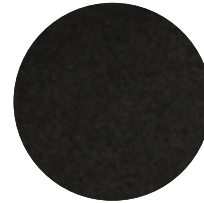
Falling Water



Galaxy



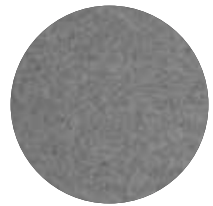
Pinnacle



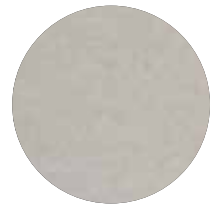
Petronas



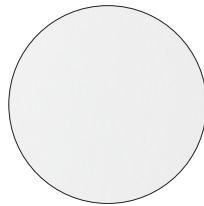
Empire



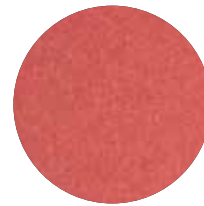
Flatiron



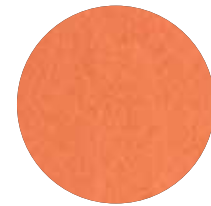
Savoye



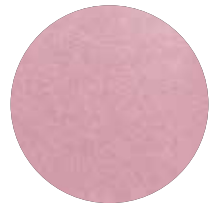
Pavilion



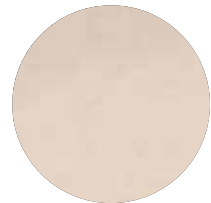
Ironbank



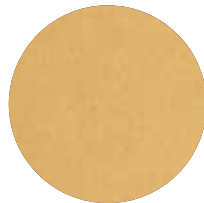
Zenith



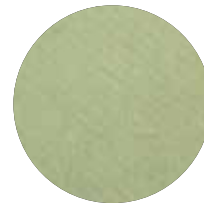
Rosada



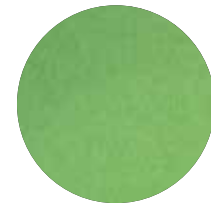
Opera



Senado



Acros



Bosco



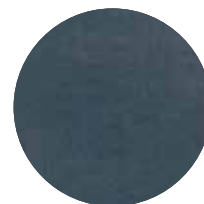
Lotus



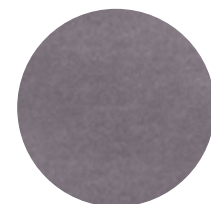
Tree House



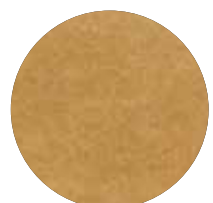
Gherkin



Muralla



Cavalier



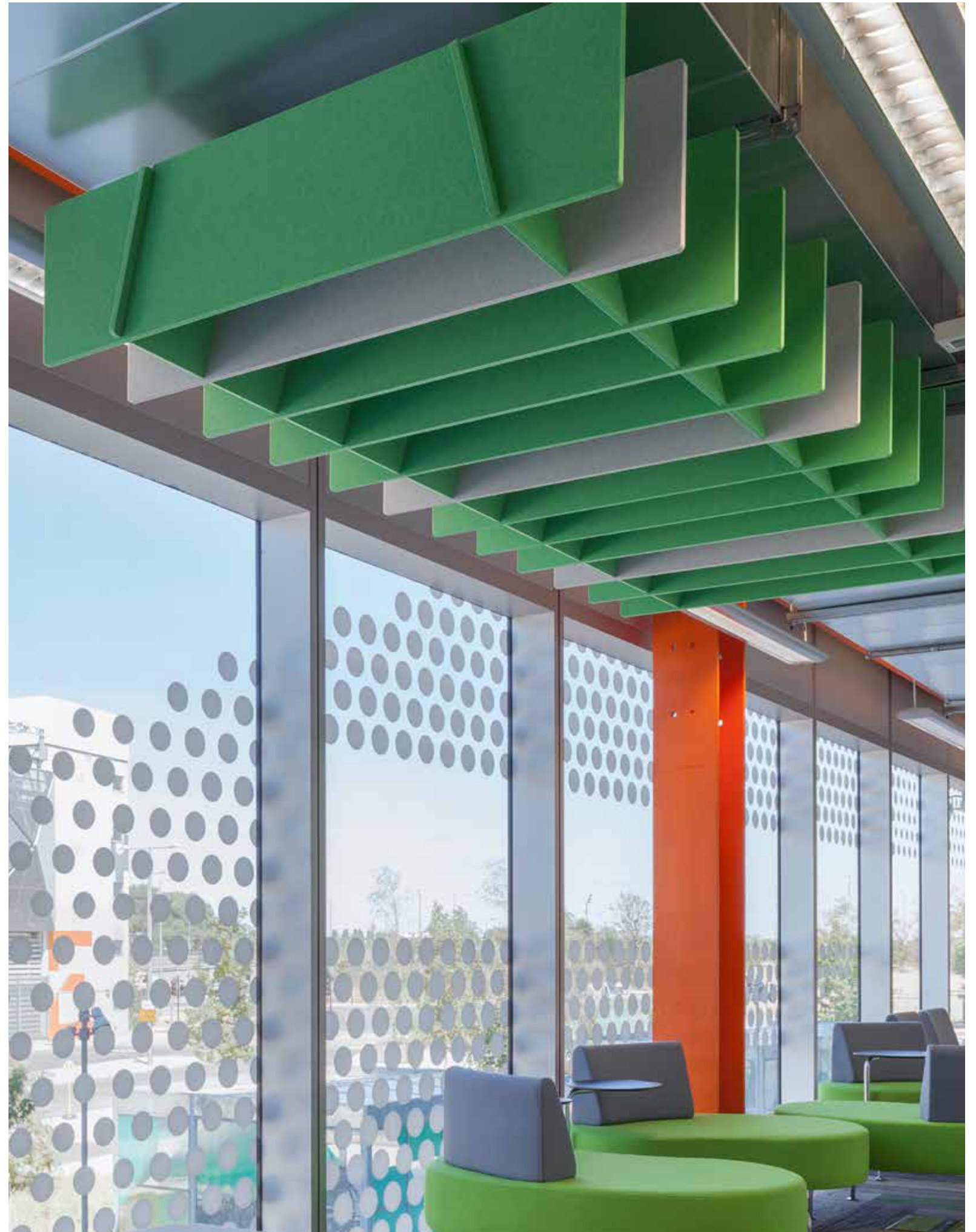
Beehive

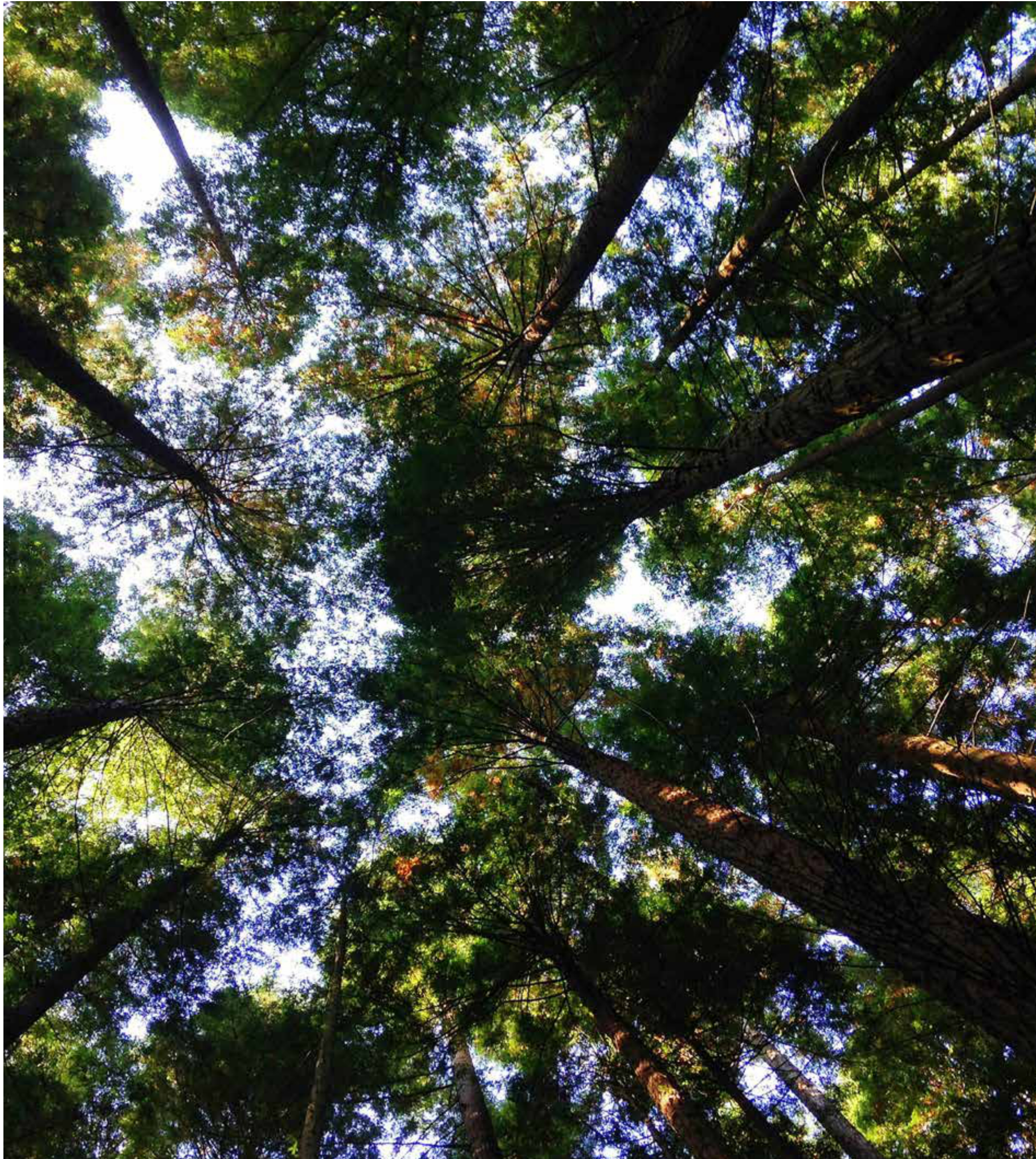


Parthenon



Sargazo





Caring for the environment

Lattice is manufactured using 100% polyester fibre and contains a minimum of 60% recycled fibre (from PET plastics). Our products are designed to be recycled at the end of their life too.

We have continual improvement programmes in which we implement a range of initiatives to mitigate the environmental 'hotspots' that we have identified. Our products are GreenRate Level A, Health Product Declaration (HPD), and CDHP Standard certified.

Lattice is made from Cube which is DeclareSM certified to be Red List free and can be used in Living Building Challenge projects. Autex has a high functioning Environmental Management System (ISO 14001) to enhance our environmental performance and contribute to sustainable development.



Declare.

